



The Hashemite Kingdom of Jordan
Ministry of Water and Irrigation

Groundwater Level Contour Map and Measuring Points of the A7/B2 Aquifer 2022

خريطة مستويات سطح المياه الجوفية ونقاط القياس في الطبقة المائية
عمان-وادي السير (A7/B2) 2022

Scale 1: 250 000

Annex No. 5

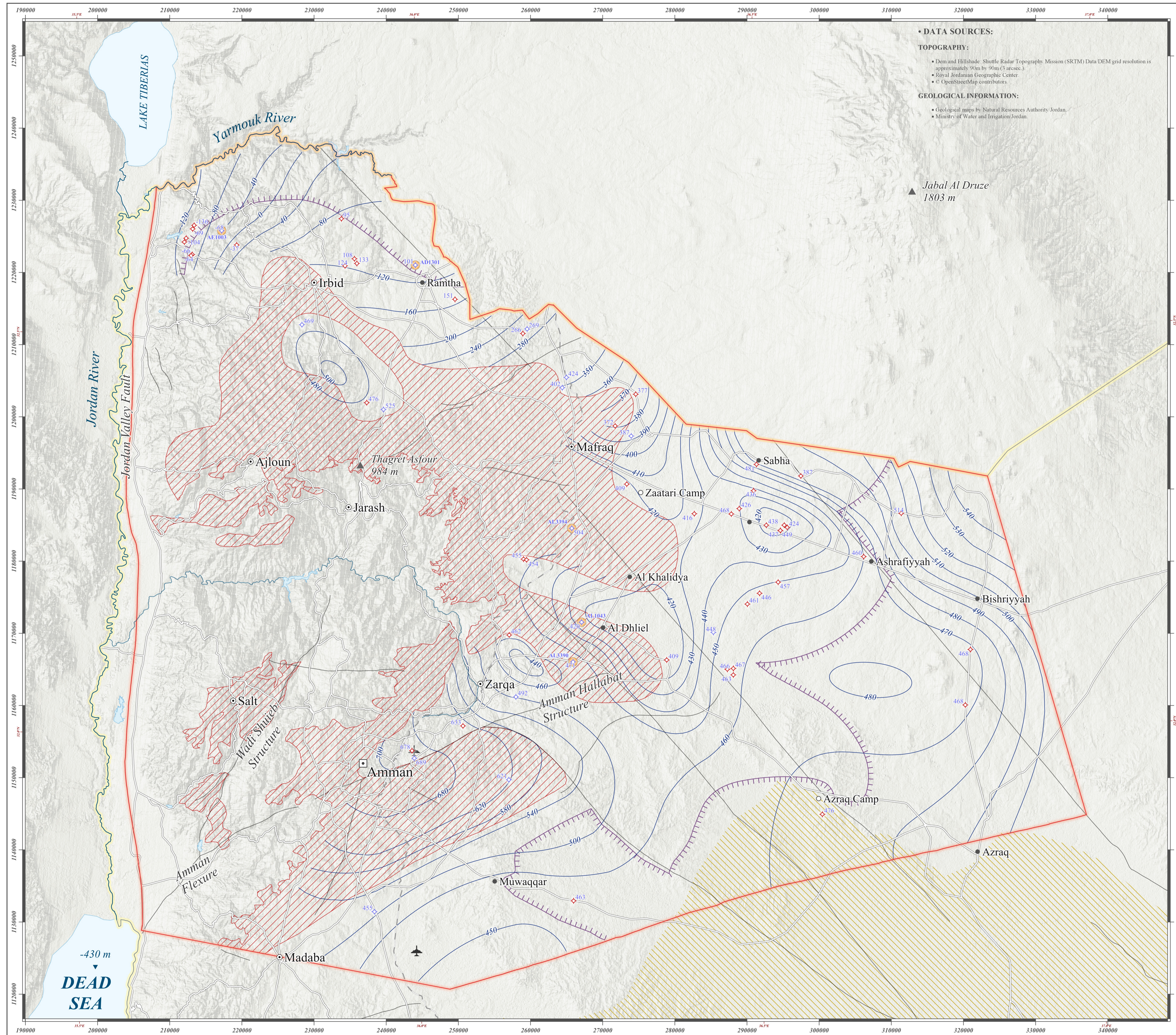
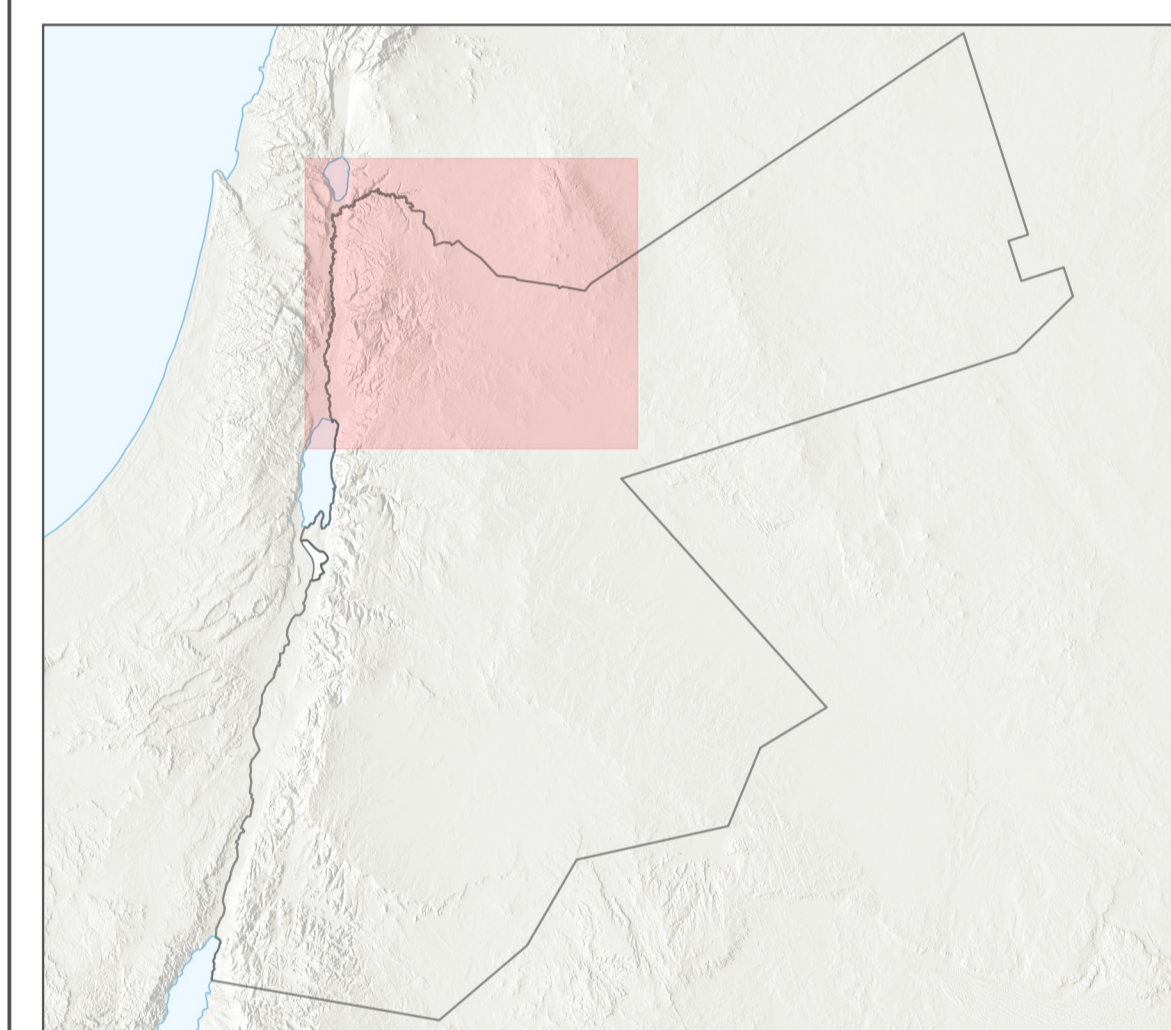
First revised ed.

Feb. 2024

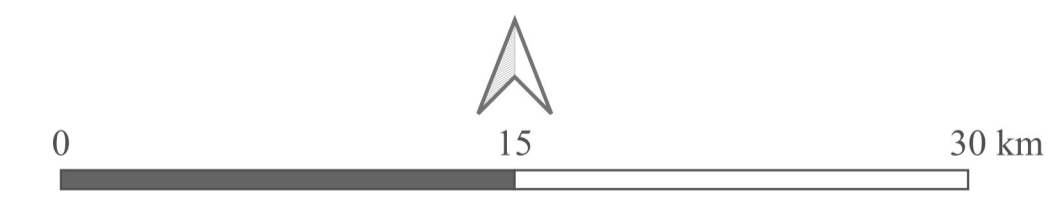


Technical Cooperation Project
Groundwater Resources Management

Implemented By:



- Groundwater Level**
 - Groundwater Level Contour Line (m a.s.l.)
 - Limit of Confinement
 - Potentially Unsaturated Area
 - High Salinity Area (1995)
 - Production well
 - Monitoring well
 - Selected hydrograph
- Tectonic Lineament**
 - Major Fault
- Topography**
 - International Border
 - Capital
 - Governorate Main Town
 - Town/ Village
 - Refugees Camp
 - Road
 - Railway
 - Airport
- Hydrology**
 - Water Body
 - River/Stream
- Study Area**
 - Study Area



Scale 1 : 250 000

COORDINATE SYSTEM:
 - Major Grid: Projected Coordinate System Palestine 1923/Palestine Belt
 Datum: Clarke 1880 (Benoit), Units: Meter, EPSG: 28192
 - Minor Grid: World Geodetic System 1984
 Datum: WGS 84, Units: Degree, EPSG: 4326

CARTOGRAPHERS: Mohammad Alhyari, Abdalrahman Alhyari

© Ministry of Water and Irrigation (MWI), The Hashemite Kingdom of Jordan
 Federal Institute For Geosciences And Natural Resources (BGR), Federal Republic of Germany
 Amman/Hanover 2023.