



The Hashemite Kingdom of Jordan
Ministry of Water and Irrigation

Saturated Thickness of the A7/B2 Aquifer

2022

خريطة سماكات الصخور المشبعة في الطبقة المائية

عمان-وادي السير

(A7/B2)

2022

Scale 1: 250 000

Annex No. 4

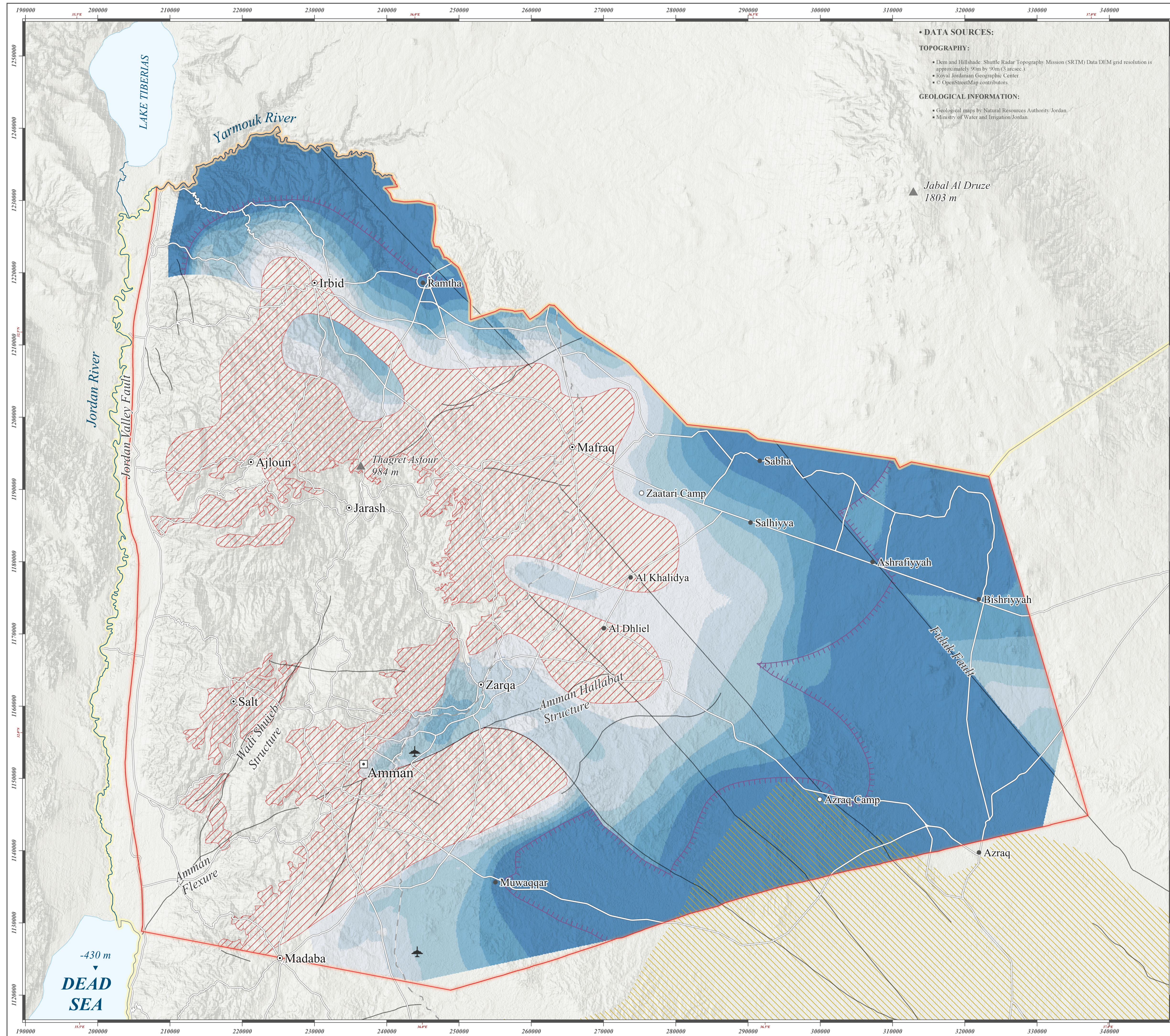
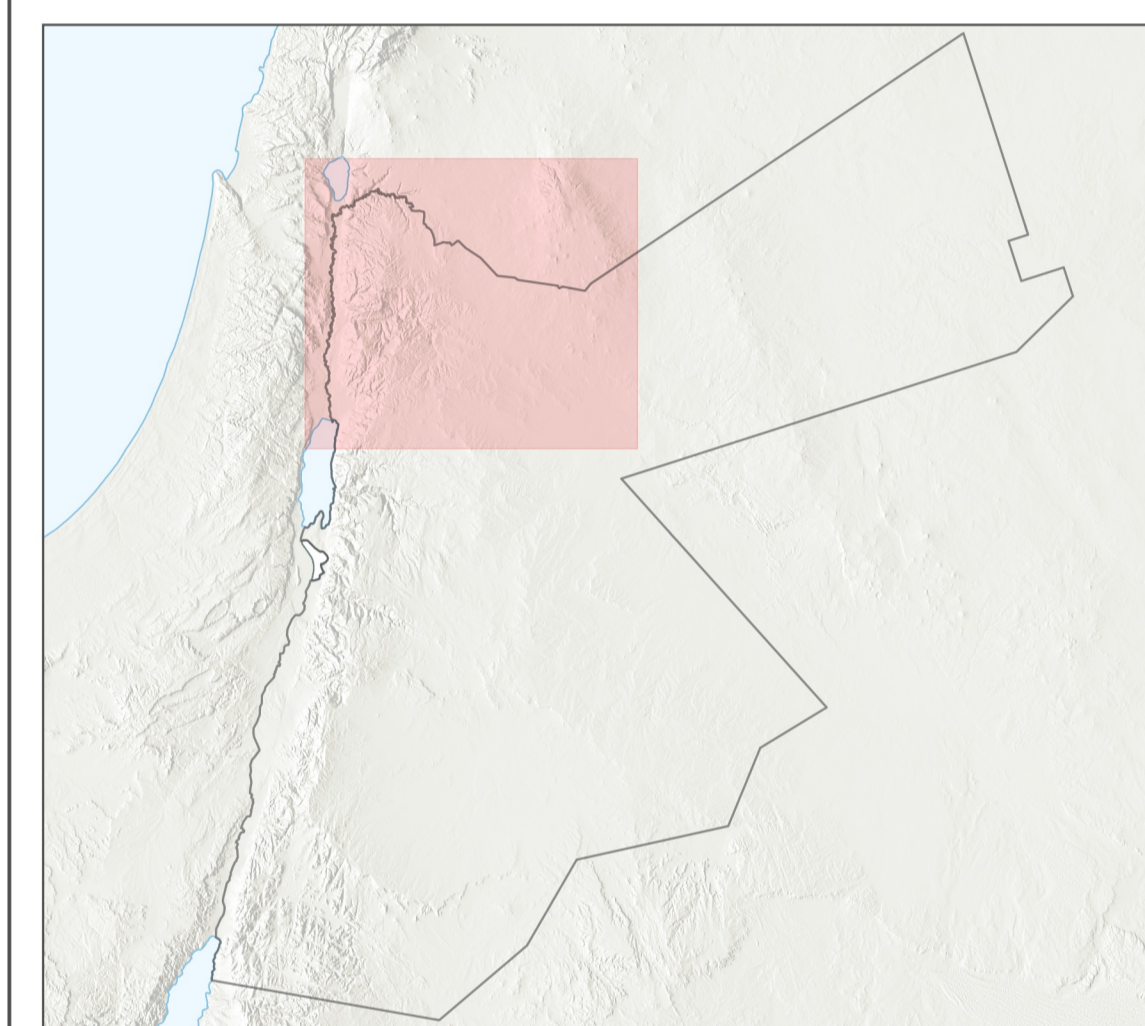
First revised ed.

Feb. 2024

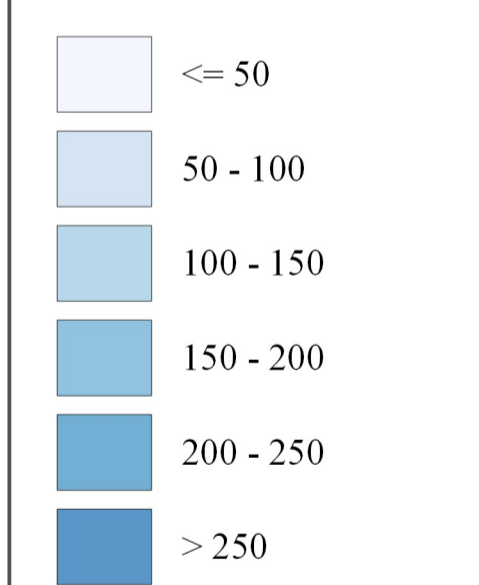


Technical Cooperation Project
Groundwater Resources Management

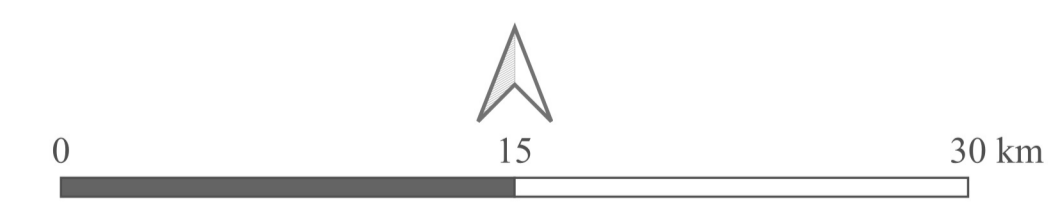
Implemented By:



Saturated Thickness in A7/B2 Aquifer



- Study Area
- Topography**
 - International Border
 - Capital
 - Governorate Main Town
 - Town/ Village
 - Refugees Camp
 - Road
 - Railway
 - Airport
- Hydrology**
 - Water Body
 - River/Stream
- Tectonic Lineament**
 - Major Fault
- Limit of Confinement
- Potentially Unsaturated Area
- High Salinity Area (1995)



Scale 1 : 250 000

COORDINATE SYSTEM:
- Major Grid: Projected Coordinate System Palestine 1923/Palestine Belt
Datum: Clarke 1880 (Benoit), Units: Meter, EPSG: 28192
- Minor Grid: World Geodetic System 1984
Datum: WGS 84, Units: Degree, EPSG: 4326

CARTOGRAPHERS: Mohammad Alhyari, Abdalrahman Alhyari

© Ministry of Water and Irrigation (MWI), The Hashemite Kingdom of Jordan
Federal Institute For Geosciences And Natural Resources (BGR), Federal Republic of Germany
Amman/Hanover 2023.