



The Hashemite Kingdom of Jordan  
Ministry of Water and Irrigation

### Depth to Groundwater in the A7/B2 Aquifer 2022

خريطة أعماق سطح المياه الجوفية في الطبقة المائية  
عمان-وادي السير  
(A7/B2)  
2022

Scale 1: 250 000

Annex No. 3

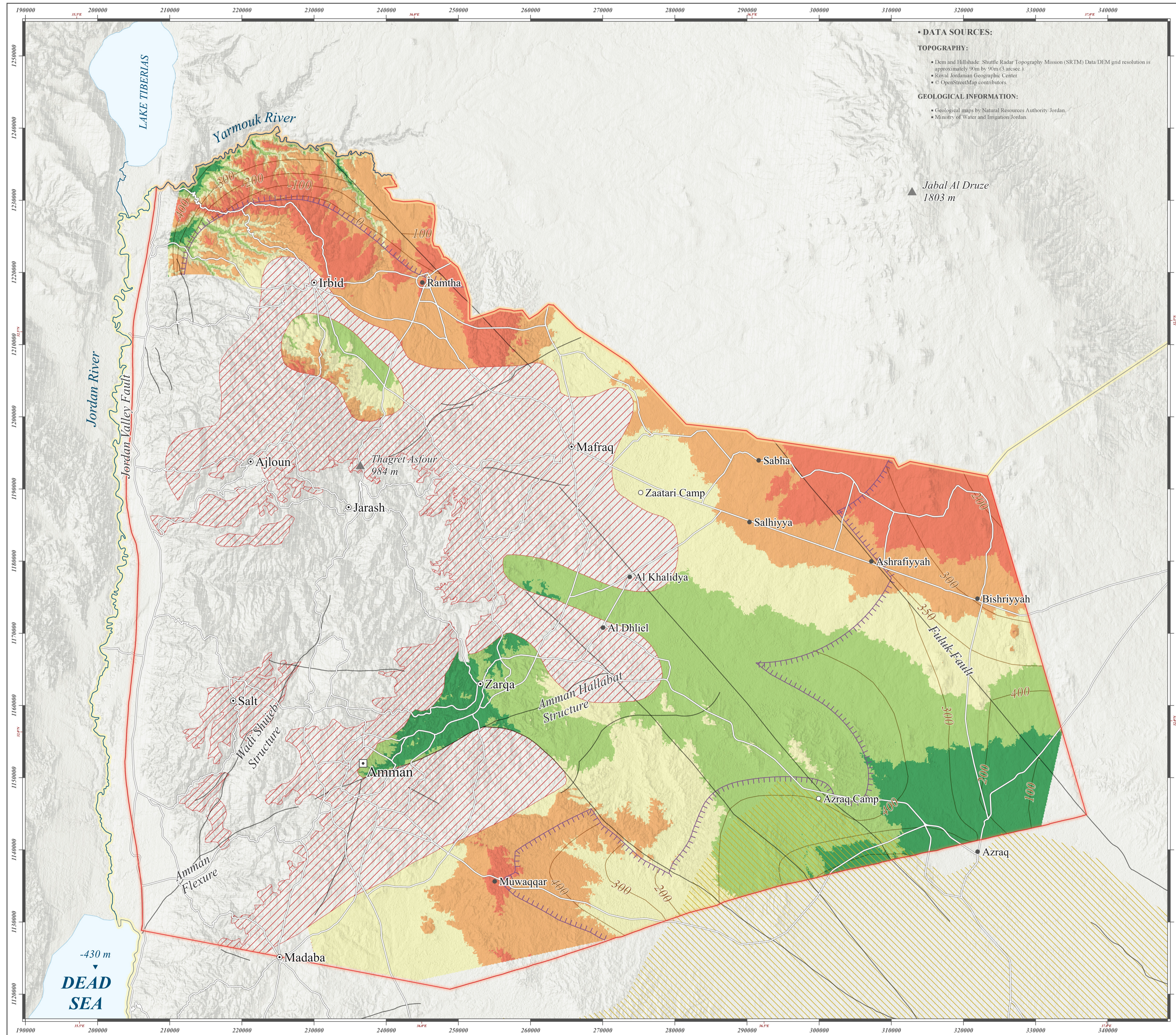
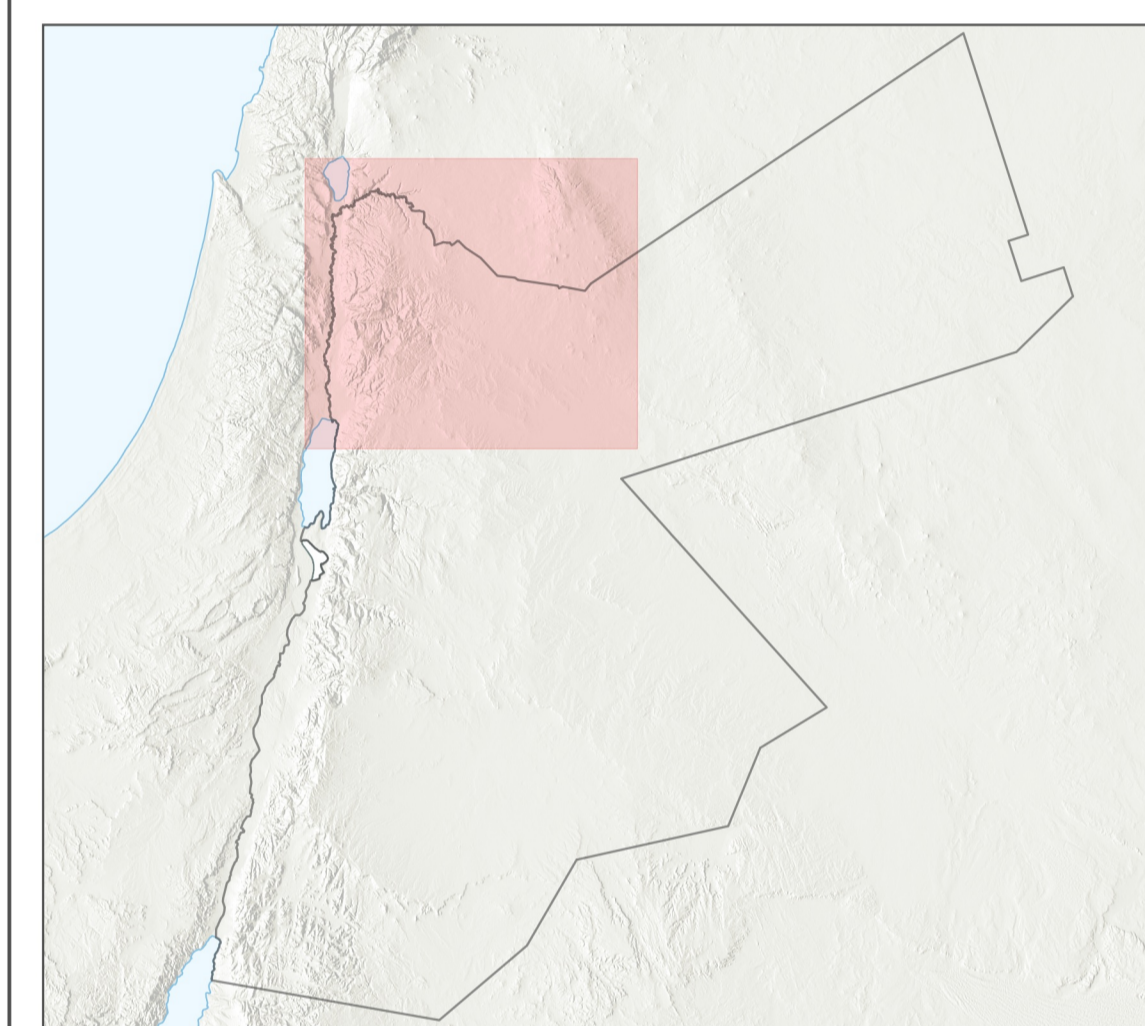
First revised ed.

Feb. 2024



Technical Cooperation Project  
Groundwater Resources Management

Implemented By:



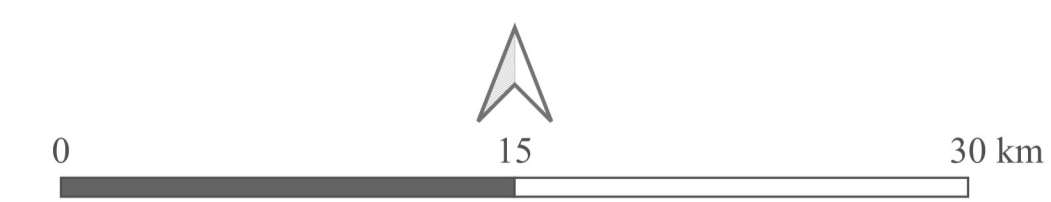
#### Depth to Groundwater (m b.g.l)

- <= 100 m
- 100 - 200 m
- 200 - 300 m
- 300 - 400 m
- > 400 m

- Study Area
- International Border
- Capital
- Governorate Main Town
- Town/ Village
- Refugees Camp
- Road

- Depth to the top of A7/B2 Aquifer (m b.g.l)
- Limit of Confinement
- Potentially Unsaturated Area
- High Salinity Area (1995)

- Hydrology
  - Water Body
  - River/Stream
- Tectonic Lineament
  - Major Fault



COORDINATE SYSTEM:  
- Major Grid: Projected Coordinate System Palestine 1923/Palestine Belt  
Datum: Clarke 1880 (Benoit), Units: Meter, EPSG: 28192  
- Minor Grid: World Geodetic System 1984  
Datum: WGS 84, Units: Degree, EPSG: 4326

CARTOGRAPHERS: Mohammad Alhyari, Abdalrahman Alhyari

© Ministry of Water and Irrigation (MWI), The Hashemite Kingdom of Jordan  
Federal Institute For Geosciences And Natural Resources (BGR), Federal Republic of Germany  
Amman/Hanover 2023.